

Suicide Rates by Age and Race in the United States, 1990-2022

John Chen

This report describes trends of age-adjusted suicide rates by age group and race in the United States from 1990 to 2022. The National Center for Health Statistics collected the underlying mortality data from death certificates. Rates were calculated using SEER*Stat 8.4.4 (NCI & IMS, Calverton, MD).

As shown in the Figure, the trends of age-adjusted suicide rates differed by age group and race. In the 15-24 and 25-34 age groups, American Indian/Alaska Native (AIAN) population had the highest suicide rates, while Asian Pacific Islander (API) and Black populations had the lowest; when older than 35 years, the highest suicide rates were mostly seen among the White population and remained lowest among Black population. Generally, younger age groups of every race, particularly those aged 15-24 years and 25-34 years, experienced an increase in suicide rates in the 2010s. The increasing trend since around 2010 was also seen among the White population in every older age group and for AIAN in age groups <65 years. A gradually declining trend was seen among API age groups ≥75 years during 1990-2022.

In 2022, the highest age-adjusted suicide rates were seen in the age group ≥85 years for the White population (25.78 per 100,000), in the age group 25-34 years for Black (15.73 per 100,000) and AIAN (30.8 per 100,000) populations, and in age group 15-24 years for API (11.4 per 100,000) population.

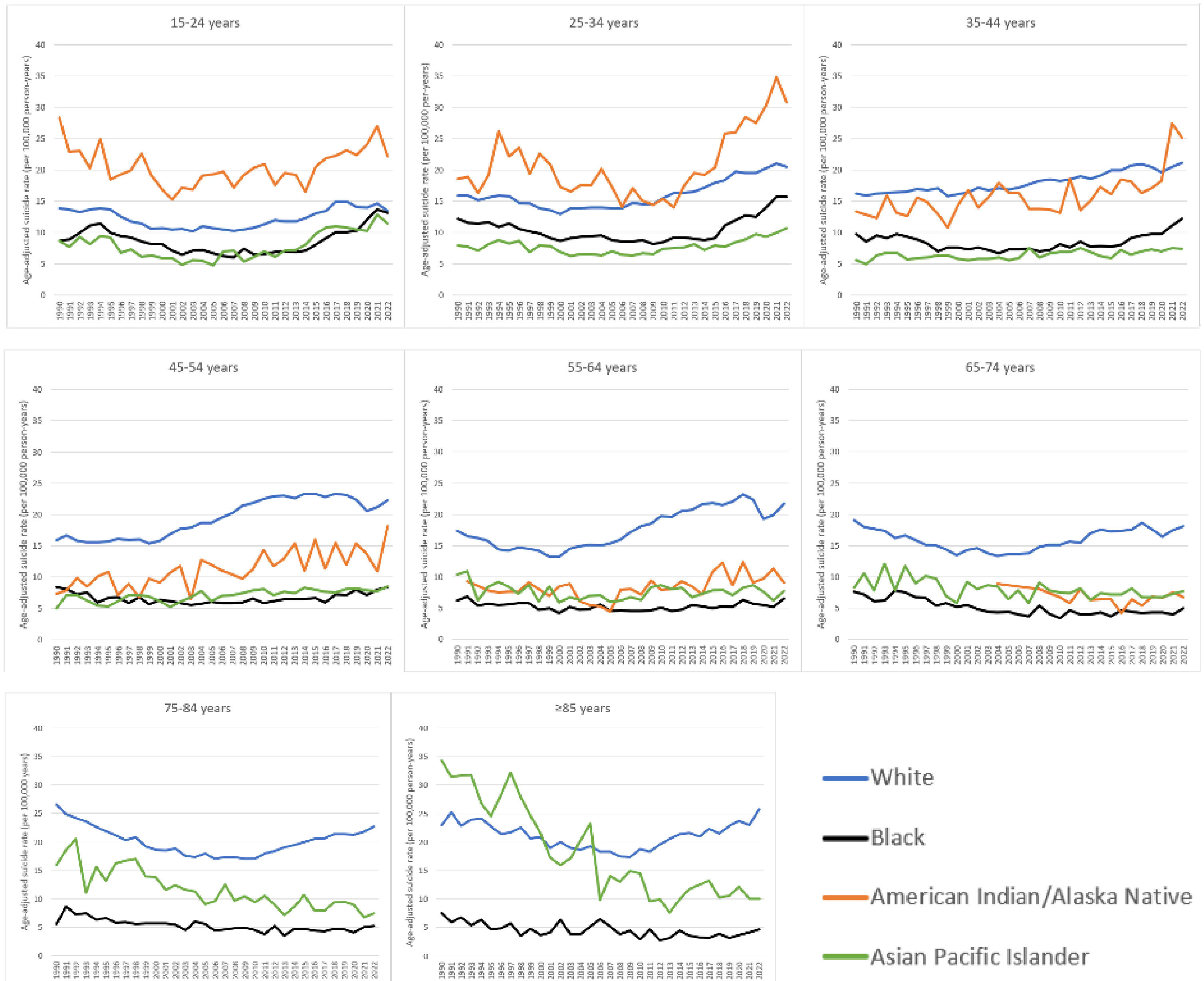
The data highlight several concerning patterns, including the rise in suicide rates among adolescents and young adults of every race, the prominently high suicide rates among young AIAN, and high suicide rates among the middle- and old-aged White populations.

Author Affiliations and Correspondence: John Chen is a junior at Johns Creek High School in Johns Creek, Georgia. Email: johnbfg123@gmail.com

Acknowledgements: The research was conducted under the supervision of Xuesong Han, PhD, at the American Cancer Society and the United Chinese Americans Data Center. Email: hanxuesong@gmail.com



Figure. Age-adjusted Suicide Rates by Age Group and Race in the United States, 1990-2022



Data are from Surveillance, Epidemiology, and End Results (SEER) Program (www.seer.cancer.gov) SEER*Stat Database: Mortality - All COD, Aggregated with State, Total U.S. (1990-2022) <Katrina/Rita Population Adjustment>, National Cancer Institute, DCCPS, Surveillance Research Program, released April 2024. Underlying mortality data provided by NCHS (www.cdc.gov/nchs). Statistics are not displayed if there are fewer than 10 cases.